

Ships. Shores. Birds. Weather.

Whatever you're scanning on radar,

## New open array scanners extend Garmin's radar horizons.

you'll see it sooner – and in

sharper detail – when you scan

with Garmin's new GMR 404

or 406 open array antennas. Both

are powerful 4 kW X-band digital

radars that combine 72 nm maximum

range with high-definition targeting.

The GMR 404 is a 4-foot scanner

with 1.8° beamwidth for superior

target separation. The GMR 406's

6-foot "big sweep" antenna takes

beamwidth down to 1.1° for even more

detail. Any network-compatible Garmin

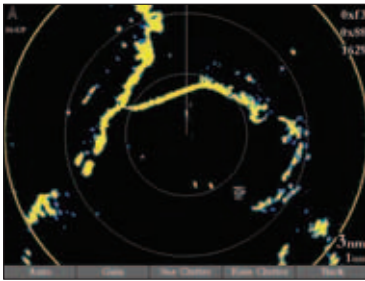
chartplotter can double as

your radar screen. And six pulse

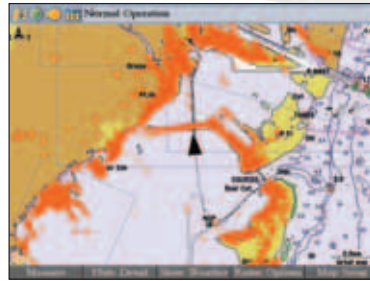
length/PRF settings help optimize

target returns at all range scales.

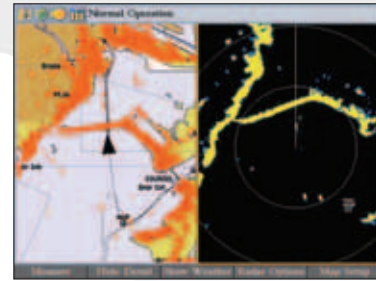




With their super-narrow beamwidths and 4 kilowatts of power, the Garmin GMR 404/406 series offer outstanding clarity, precision and target definition.



As an aid in locational awareness, the GMR 404/406 radar image can be overlaid on the Garmin network's moving map cartography display.



A split-screen view allows simultaneous display of mapping alongside the standard radar picture.

|                                       |  |
|---------------------------------------|--|
| <b>Antenna Type:</b>                  | End fed slotted waveguide  |
| <b>Input Return Loss:</b>             | Better than -20 dB   |
| <b>Polarization:</b>                  | Horizontal   |
| <b>Antenna Gain:</b>                  | 27 dB (404), 29 dB (406)   |
| <b>Horizontal Sidelobes:</b>          | -23 dB within +/-10 deg of main,<br>-30 dB outside +/-10 deg of main (404).<br>-25 dB within +/-10 deg of main,<br>-30 dB outside +/-10 deg of main (406). |
| <b>Antenna Weight:</b>                | 12 lbs (404), 16 lbs (406)   |
| <b>Pedestal Physical Size:</b>        | 24" x 11" x 16"  |
| <b>Transmit Power:</b>                | 4KW  |
| <b>Power input:</b>                   | 10.5-38 Vdc, 45W typical   |
| <b>Input Power (100 kts wind):</b>    | 130 W maximum  |
| <b>Antenna Beamwidth:</b>             | 1.8 (404) and 1.1 (406) degrees horizontal /<br>25 degrees vertical (both 404 & 406)   |
| <b>Antenna RPMs:</b>                  | 24 rpm and 48 rpm  |
| <b>Scanner Operating Temperature:</b> | Range: -10 degrees C to 60 degrees C,<br>and a relative humidity up to 95% at 35<br>degrees C  |
| <b>Wind Velocity (relative):</b>      | Withstands up to 100 Kts without<br>performance degradation  |
| <b>Scanner Waterproofing:</b>         | Waterproof to IEC 60529 IPX6 standards   |
| <b>Bearing Accuracy:</b>              | 1 degree   |
| <b>Maximum Range:</b>                 | 72 nm  |
| <b>Minimum Range:</b>                 | 20 meters  |
| <b>Range Discrimination:</b>          | 20 meters  |
| <b>Range Ring Accuracy:</b>           | 20 meter or +/- 1.5% of range scale,<br>whichever is greater   |
| <b>Receiver Noise Figure:</b>         | Less than 4 dB   |

|  |  |
|--|--|
| <b>Range/Pulse Width/PRF (nm/nsec/Hz):</b> | 0.125/65/2304<br>0.250/65/2304<br>0.500/80/2304<br>0.750/200/1152<br>1.0/250/1152<br>1.5/500/576<br>2.0/500/576<br>3.0/800/576<br>4.0/800/576<br>6.0-24/1000/576<br>36-72/1000/288 |
| <b>Clutter Suppression:</b>                | Sea Clutter<br>Rain Clutter<br>FTC   |
| <b>Pedestal Weight:</b>                    | 42 lbs (19 kg)   |
| <b>Cable:</b>                              | 15 meters long<br>8.4 lbs (3.8 kg)   |
| <b>Controls:</b>                           | Auto & Manual Gain Adjust; Manual or<br>Auto (AFC) receiver tuning; Manual<br>adjust for Rain Clutter and 3 presets for<br>Sea Clutter; FTC presets.                               |
| <b>*VRM/EBL:</b>                           | 2 user adjustable, capable of floating   |
| <b>*Presentation Modes:</b>                | North up, Course up, Heading up  |
| <b>Interference Rejection:</b>             | Yes - Anti-jamming algorithm   |
| <b>*Radar/Chart Overlay:</b>               | Overlay mode is supported.<br>Also has split overlay with<br>standard radar presentation.  |
| <b>*Zoom Mode:</b>                         | 2x, 4x   |
| <b>*Trails:</b>                            | Short, Medium, Long  |
| <b>*Guard Zone Alarm:</b>                  | 2 guard zones - user adjustable  |
| <b>*Off center Function:</b>               | Look ahead, Auto Shift and Manual  |
| <b>FTC:</b>                                | Low, Medium, High  |
| <b>*MARPA:</b>                             | Yes. Tracks up to 10 MARPA targets for<br>radar plotting and collision avoidance.<br>(Heading sensor is required)  |

©2006 Garmin Ltd. or its subsidiaries



Garmin International, Inc.  
1200 East 151st Street  
Olathe, Kansas 66062, U.S.A.  
913/397.8200 fax 913/397.8282

Garmin (Europe) Ltd.  
Unit 5, The Quadrangle  
Abbey Park Industrial Estate  
Romsey, SO51 9DL, U.K.  
44/1794.519944 fax 44/1794.519222

Garmin Corporation  
No. 68, Jangshu 2nd Rd.  
Shijr, Taipei County, Taiwan  
886/2.2642.9199 fax 886/2.2642.9099

www.garmin.com

Specifications are preliminary and subject to  
change without notice.

\* All radar graphics and cartography pictured here are  
derived from a Garmin Marine Network™ system utilizing  
the GPSMAP® 3006C/3010C series chartplotter/MFD  
(multifunction display).